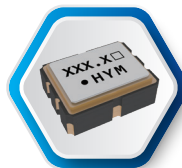


HSO323S SERIES

CRYSTAL OSCILLATOR, DIFFERENTIAL OUTPUT

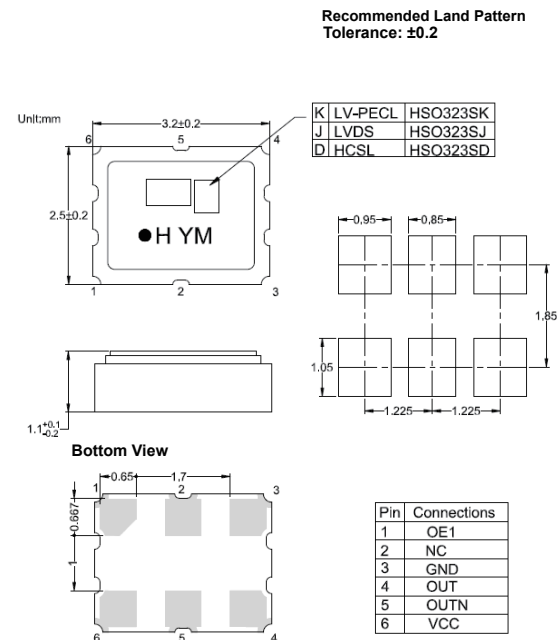
☑ RoHS Compliant ☑ Pb Free



STANDARD SPECIFICATION

Items	Parameter		
	LV-PECL	LVDS	HCSL
Output Specification	LV-PECL	LVDS	HCSL
Output Frequency Range	25~212.5MHz		
Supply Voltage	+2.5±0.125V, +3.3±0.165V		
Current Consumption	60mA	40mA	45mA
Stand-by Current (#1 pin = "L" Level)	10µA Max.		
Load Resistance	50Ω to vdd-2	100Ω Output-OUTN	50Ω
Symmetry [at outputs cross point]	45~55%		
Start-up Time	10 ms Max.		
"0" Level Output Voltage	Vdd-1.81~Vdd-1.62V	-	-0.15~0.15V
"1" Level Output Voltage	Vdd-1.025~Vdd 0.88V	-	0.58~0.85V
Rise and Fall Time	1ns Max. [20~80% Output Level]	1ns Max. [20~80% Output Level]	0.5ns Max. [20~80% Output Level]
OE Pin 0 Level Input Voltage	Vdd×0.3 Max.		
OE Pin 1 Level Input Voltage	Vdd×0.7 Min.		
Phase Jitter	25≤f0≤40	1ps Max. (F offset : 12KHz ~ 5MHz)	
	40≤f0≤212.5	1ps Max. (F offset : 12KHz ~ 20MHz)	
Storage Temp.	-40°C~85°C		

DIMENSION



FREQUENCY STABILITY OVER OPERATING TEMPERATURE RANGE

Operating Temperature	Stability
-10 ~ +70°C	±20ppm
-40 ~ +85°C	±25ppm
-40 ~ +125°C	±100 ppm

Actual Size

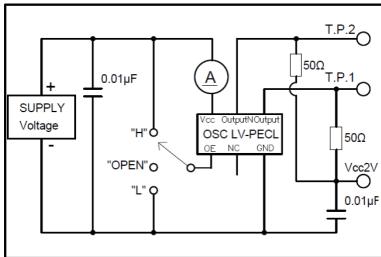
*For other specification, please contact us.

Packing Unit : 3,000pcs/Reel.

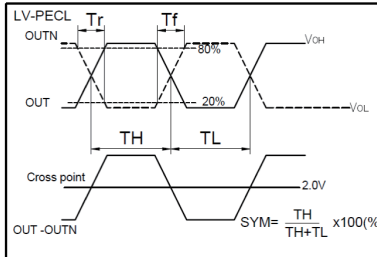
TEST CIRCUIT AND OUTPUT WAVEFORM

■ LV-PECL

Measurement Circuit

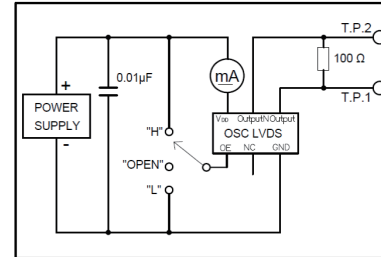


Output Waveform

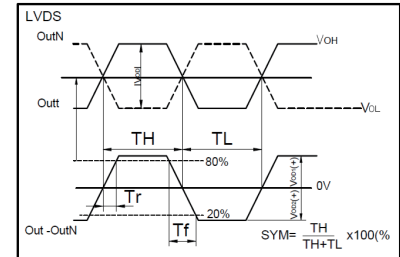


■ LVDS

Measurement Circuit

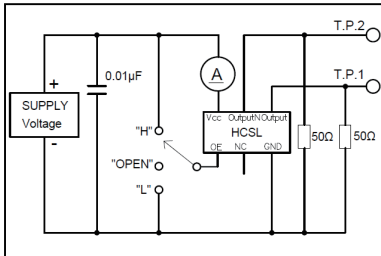


Output Waveform



■ HCSL

Measurement Circuit



Output Waveform

